

SPECIFICATIONS

CONTACT RATING: 25mA @24 VDC (switching Rating)
 100mA @50VDC(non-switching Rating)
 ELECTRICAL LIFE:2,000 operations min. @ 24VDC,25mA
 CONTACT RESISTANCE: 50 mΩ max. initial
 INSULATION RESISTANCE: 100 MΩ min. at 500 VDC
 DIELECTRIC STRENGTH: 500 V AC /1 min
 OPERATION FORCE: 400 gf max. (DP series)
 1000 gf max. (DS & DA series)
 STORAGE TEMPERATURE: -40°C to 85°C
 CIRCUIT: SPST

MATERIALS

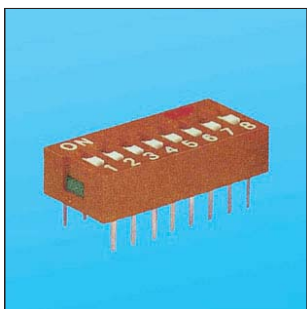
COVER: UL94V-0 PBT, Thermoplastic(Red.Black.Blue)
 BASE: UL94V-0 PBT, Thermoplastic(Black)
 ACTUATOR: UL94V-0 PBT, Thermoplastic(white)
 CONTACT PLATING: Gold plating over nickel
 TOP SEAL: Polyester film
 POTTING MATERIAL: Epoxy

INDEX

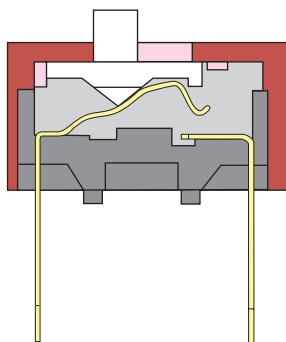
TOGGLE

ROCKER

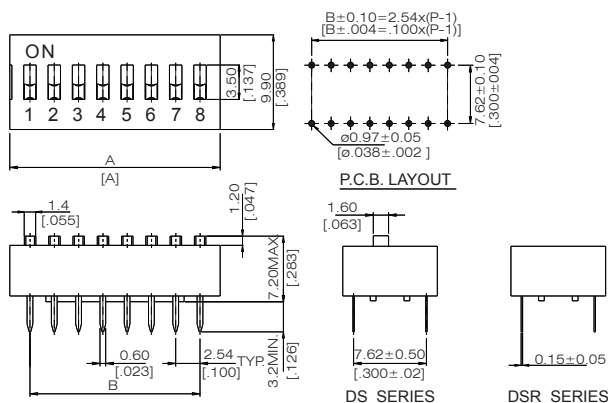
DS,DSR SERIES SLIDE TYPE DIP SWITCH



CONTACT SYSTEM



DIMENSIONS

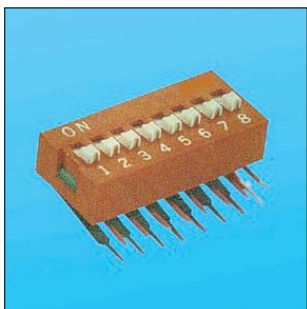


SLIDE

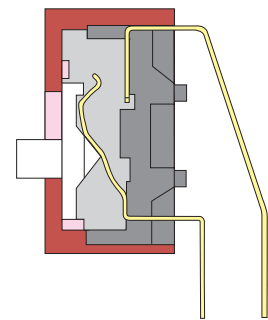
PUSH BUTTON

DIP

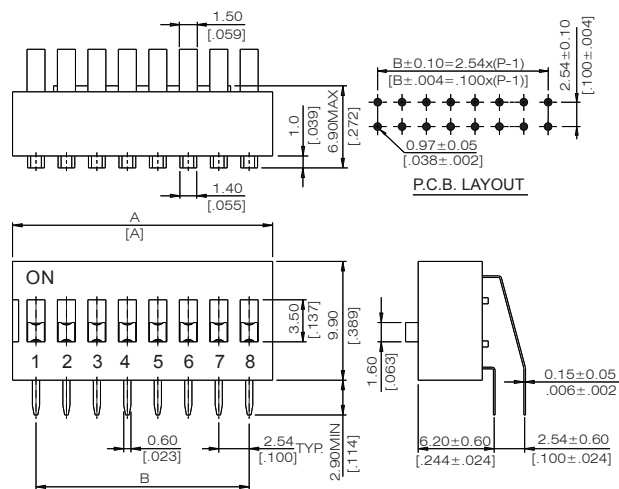
DA SERIES RIGHT ANGLE TYPE DIP SWITCH



CONTACT SYSTEM

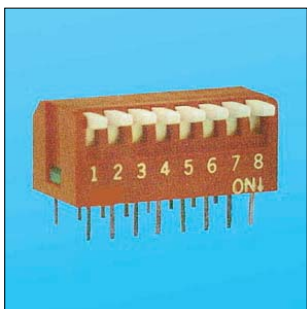


DIMENSIONS

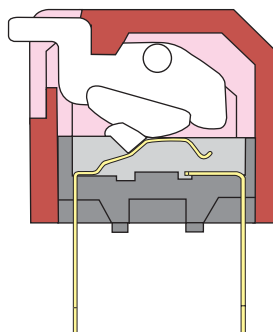


TACT

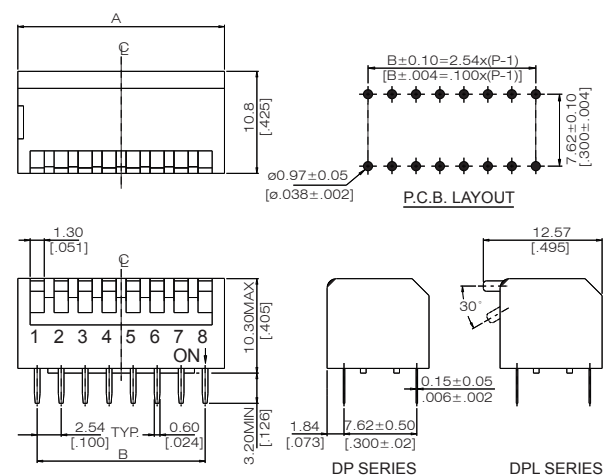
DP,DPL SERIES PIANO TYPE DIP SWITCH



CONTACT SYSTEM



DIMENSIONS



SOLDERING AND CLEANING PROCESSES

- △ Keep all switch contacts in their "OFF" position for all operations.
- △ WAVE SOLDERING: Recommended solder temperature at 500 °F (260 °C) max 5 seconds.
- △ HAND SOLDERING: Use a soldering iron of 30 Watts or less, controlled at 350 °C approximately 5 seconds.
- △ Care should be exercised so that flux from the upper part of the printed circuit board does not adhere to the switch.
- △ Do not clean the switch body except with top tape sealed type, which can only spray of cleaning method from top s/w.

MODELS

DS - 12 DSR - 12	DA - 12	DP - 12 DPL - 12	12	31.84[1.254]	27.94[1.100]
DS - 10 DSR - 10	DA - 10	DP - 10 DPL - 10	10	26.76[1.054]	22.86[.900]
DS - 09 DSR - 09	DA - 09	DP - 09 DPL - 09	09	24.22[.954]	20.32[.800]
DS - 08 DSR - 08	DA - 08	DP - 08 DPL - 08	08	21.68[.854]	17.78[.700]
DS - 07 DSR - 07	DA - 07	DP - 07 DPL - 07	07	19.14[.754]	15.24[.600]
DS - 06 DSR - 06	DA - 06	DP - 06 DPL - 06	06	16.60[.654]	12.70[.500]
DS - 05 DSR - 05	DA - 05	DP - 05 DPL - 05	05	14.06[.554]	10.16[.400]
DS - 04 DSR - 04	DA - 04	DP - 04 DPL - 04	04	11.52[.454]	7.62[.300]
DS - 03 DSR - 03	DA - 03	DP - 03 DPL - 03	03	8.98[.354]	5.08[.200]
DS - 02 DSR - 02	DA - 02	DP - 02 DPL - 02	02	6.44[.254]	2.54[.100]
PROD. NO.			NO.OF POS.	DIM. A (DP,DPL)	DIM. B (DS,DSR,DA)
SCHEMATIC(TYP.)					
 (2,3,4,5,6,7,8,9,10,12, POS AVAIL)					

HOW TO ORDER

