

SPECIFICATIONS

CONTACT RATING: 0.4 VA max. @20V AC or DC max.
ELECTRICAL LIFE: 40,000 make-and-break cycles at full load
CONTACT RESISTANCE: 50 mΩ max. initial @2-4 VDC, 100 mA
INSULATION RESISTANCE: 1,000 MΩ min.
DIELECTRIC STRENGTH: 500 V RMS @ sea level.
OPERATING TEMPERATURE: -30°C to +85°C

MATERIALS

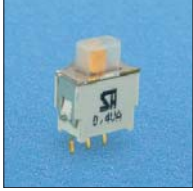
CASE: nylon 6/6
ACTUATOR: nylon 6/6
FRAME: nylon 6/6
TERMINAL: Copper alloy, gold plated
CONTACT: phosphor bronze, gold plated
SWITCH SUPPORT: Copper alloy, tin plated
SLIDE BUTTON: POM
WATERPROOF COVER: Silica gel

How do you build the switches you need!!

S
S
 -
 4
 -
 C
K
 -

Switch Function		Termination		Contact Material		RoHS code
SS-4	SP on-none-on	C	P.C	K	(std) gold / tin plated	H = RoHS Compliant
SS-4A	SP on-off-on	H	horizon	R	gold plated	
SS-5	DP on-none-on	M	SMT			
SS-5A	DP on-off-on					

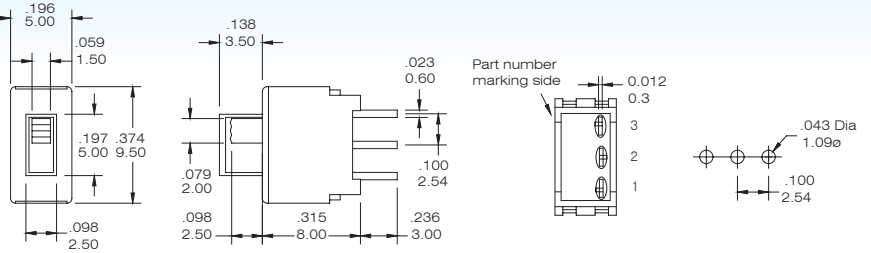
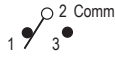
C



PC (STRAIGHT TYPE)

Model No.	Switching position		
SS-4-C	ON	none	ON
SS-4A-C	ON	OFF	ON
Term. Comm.	2-3	open	2-1

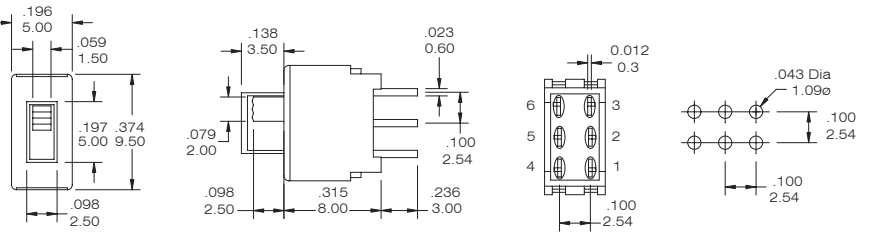
SPDT



SS-4-CK

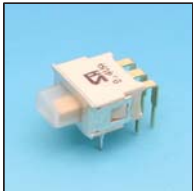
Model No.	Switching position		
SS-5-C	ON	none	ON
SS-5A-C	ON	OFF	ON
Term. Comm.	2-3,5-6	open	2-1,5-4

DPDT



SS-5-CK

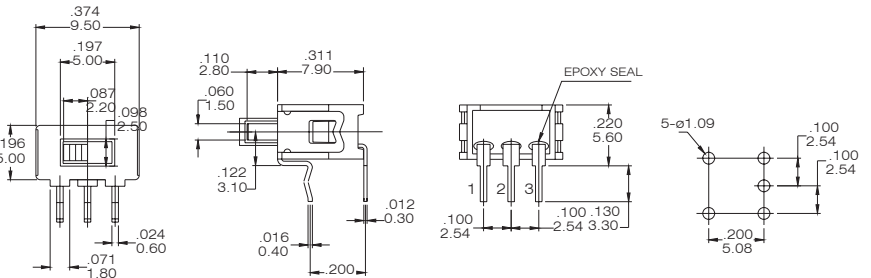
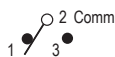
H



HORIZON RIGHT ANGLE

Model No.	Switching position		
SS-4-H	ON	none	ON
SS-4A-H	ON	OFF	ON
Term. Comm.	2-3	open	2-1

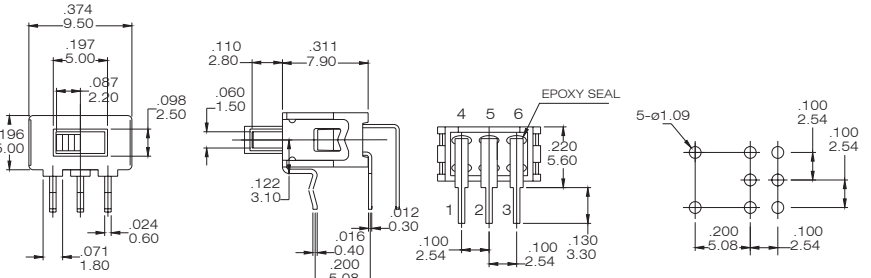
SPDT



SS-4-HK

Model No.	Switching position		
SS-5-H	ON	none	ON
SS-5A-H	ON	OFF	ON
Term. Comm.	2-3,5-6	open	2-1,5-4

DPDT



SS-5-HK

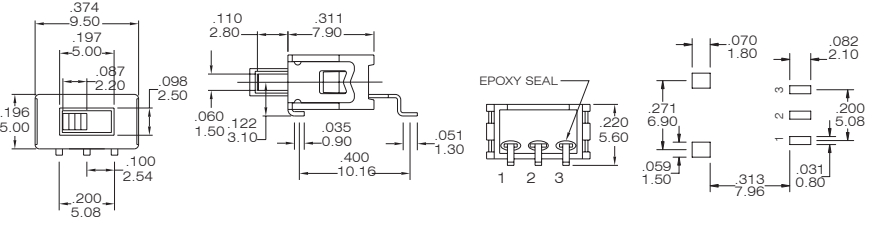
M



SURFACE MOUNTING

Model No.	Switching position		
SS-4-M	ON	none	ON
SS-4A-M	ON	OFF	ON
Term. Comm.	2-3	open	2-1

SPDT



SS-4-MK

CONTACT MATERIAL OPTIONS

CODE	CONTACT MATERIAL	TERMINAL MATERIAL	RATING
K	Brass, gold plated	Copper alloy, tin plated	0.4VA MAX @ 20 VAC or VDC
R	Gold plated over nickel plated	Gold plated over nickel plated	0.4VA MAX @ 20 V AC or DC MAX